

Table with columns for sheet numbers and corresponding grid coordinates.

Table with columns for 'DATES OF SURVEY' and 'FIELD BOOKS'.

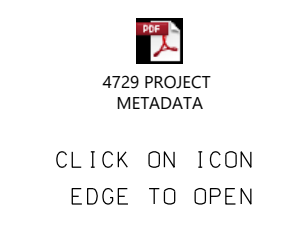
Table with columns for 'APPROVED' signatures and dates for 'L. GEBRUE' and 'M. EDRIE'.

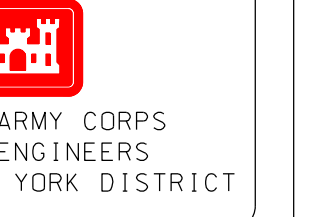
Table with columns for 'APPROVED' signatures and dates for 'D. CLERGE' and 'J. MRIZ'.

VH-101 SHEET 1 OF 17

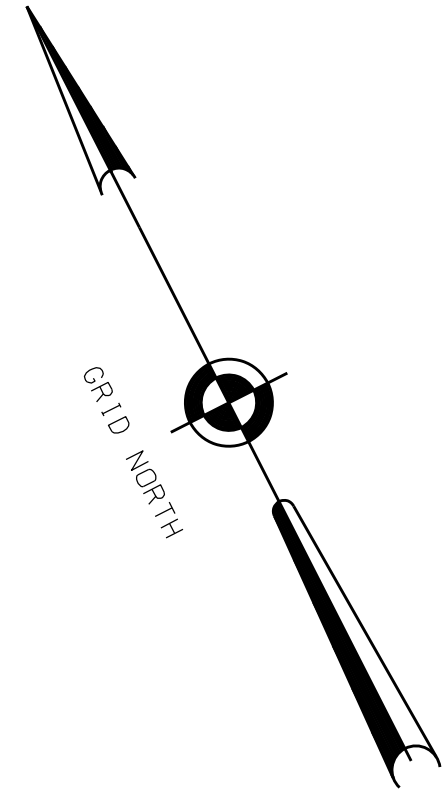
PROJECT SPECIFIC NOTES:
- THE INFORMATION DEPICTED ON THIS MAP REPRESENTS THE RESULTS OF SURVEYS MADE ON THE DATES INDICATED AND CAN ONLY BE CONSIDERED AS THE GENERAL CONDITIONS EXISTING AT THAT TIME.
- THE SOUNDINGS ON THIS MAP MEET EM 1110-2-1003 ACCURACY STANDARDS.
- COORDINATES REFER TO US STATE PLANE COORDINATE SYSTEM NAD 1983, LONG ISLAND LAMBERT - ZONE 3104, US SURVEY FEET.
- SOUNDINGS ON THIS MAP REFER TO THE PLANE OF MEAN LOWER LOW WATER (MLLW) [EPOCH 1983-2001].
- MEAN LOWER LOW WATER IS 2.7-2.8 FEET BELOW NAVD88 AS DETERMINED USING DATUM (VER. 3.0).
- SOUNDINGS DEPICTED ON THIS MAP ARE BASED ON A 3' x 3' MEDIAN CELL, SORTED TO A 45° INTERVAL.
- CONTOURS ON THIS MAP WERE GENERATED USING THE MAP DATA SET.
- THE DATA DEPICTED ON THIS MAP SHOULD NOT BE USED FOR VOLUME CALCULATION PURPOSES.
- THIS SURVEY WAS PERFORMED USING REAL TIME KINEMATIC GPS FROM STATION "SIMPSON 2 RM 3 INPS SANDY HOOK-BAY-NY DOT RTN".
- THIS MAP IS CEPD COMPLIANT IN ACCORDANCE WITH ER 1110-2-8160 AND EM 1110-2-6056.

Table with columns for 'NSRS BENCHMARK' and 'LOCAL CONTROL DATA'.





US ARMY CORPS OF ENGINEERS NEW YORK DISTRICT



RED/WHITE "A" W/LIGHT & WHISTLE EBB 9 AUGUST 2018

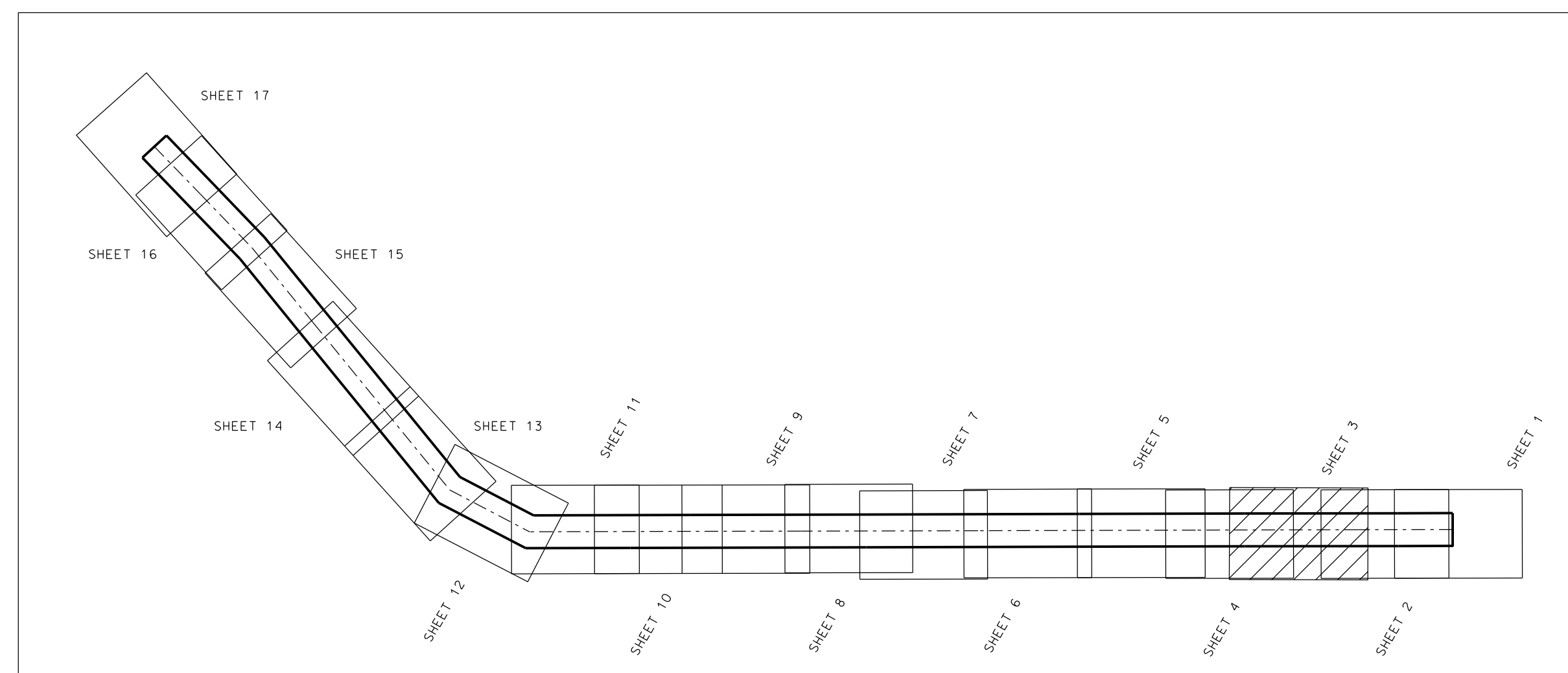
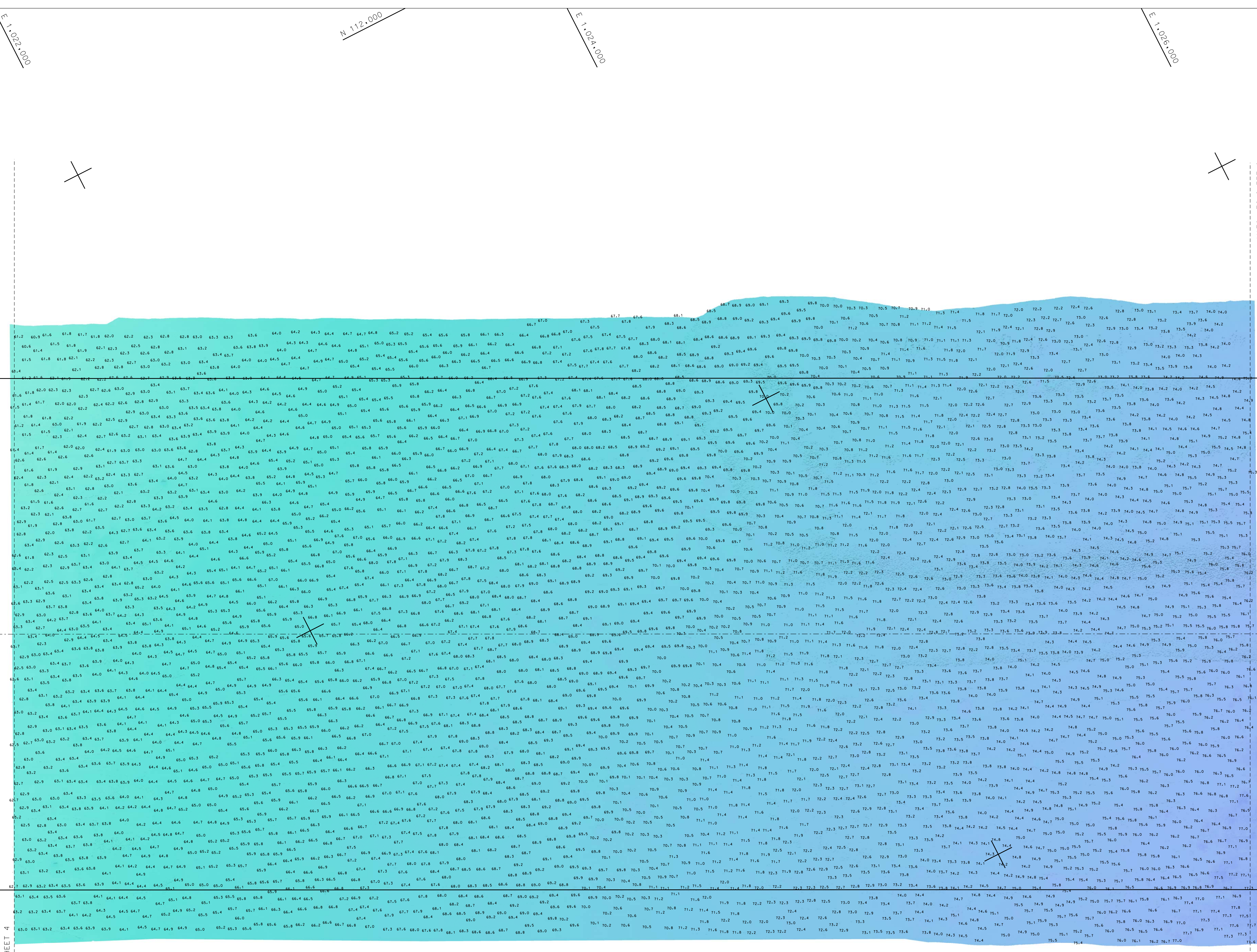
N 142,000 E 1,024,000

N 110,000 E 1,024,000

N 110,000 E 1,024,000

N 108,000 E 1,024,000

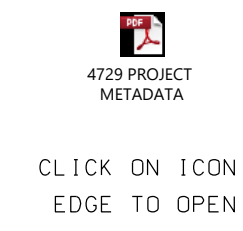
N 108,000 E 1,024,000



SHEET LAYOUT -NOT TO SCALE-

NSRS BENCHMARK BENCHMARK: SIMPSON 2 (PID: KVD091) ELEVATION: 6.92' (NAVD 1988)

LOCAL CONTROL DATA BENCHMARK: F 342 (PID: KU1257) ELEVATION: 14.37' (NAVD 1988)



CLICK ON ICON EDGE TO OPEN

PROJECT SPECIFIC NOTES: -THE INFORMATION DEPICTED ON THIS MAP REPRESENTS THE RESULTS OF SURVEYS MADE ON THE DATES INDICATED AND CAN ONLY BE CONSIDERED AS THE GENERAL CONDITIONS EXISTING AT THAT TIME. -THE SOUNDINGS ON THIS MAP MEET EM 1110-2-1003 ACCURACY STANDARDS. -COORDINATES REFER TO US STATE PLANE COORDINATE SYSTEM NAD 1983, LONG ISLAND LAMBERT - ZONE 5104, US SURVEY FEET. -SOUNDINGS ON THIS MAP REFER TO THE PLANE OF MEAN LOWER LOW WATER (MLLW) [EPOCH 1983-2001]. -MEAN LOWER LOW WATER IS 2.7-2.8 FEET BELOW NAVD88 AS DETERMINED USING VDATUM IVER, 3.01. -SOUNDINGS DEPICTED ON THIS MAP ARE BASED ON A 3' x 3' MEDIAN CELL, SORTED TO A 45' INTERVAL. -CONTOURS ON THIS MAP WERE GENERATED USING THE MAP DATA SET. -THE DATA DEPICTED ON THIS MAP SHOULD NOT BE USED FOR VOLUME CALCULATION PURPOSES. -THIS SURVEY WAS PERFORMED USING REAL TIME KINEMATIC GPS FROM STATION "SIMPSON 2 RM 3,NPS SANDY HOOK,BAY,NY DOT RTN". -THIS MAP IS CEPD COMPLIANT IN ACCORDANCE WITH ER 1110-2-8160 AND EM 1110-2-6056.

Table with columns for DATE, TIME, and other survey parameters.

DATES OF SURVEY: JULY 18-23 2018 BUDGET: 1-29-2018

SCALE: ONE INCH = 500 FEET FIELD BOOKS:

APPROVED: L. GEORGE, DISTRICT ENGINEER; APPROVED: M. DORTE, DISTRICT ENGINEER; APPROVED: D. CLARKE, DISTRICT ENGINEER; APPROVED: J. BRAZ, DISTRICT ENGINEER; DATE: 6 SEPTEMBER 2018

DEPARTMENT OF THE ARMY CORPS OF ENGINEERS NEW YORK DISTRICT OPERATIONS DIVISION SURVEY SECTION CENNA-OP-S

NEW YORK HARBOR AMBROSE CHANNEL CONDITION SURVEY

VH-103 SHEET 3 OF 17

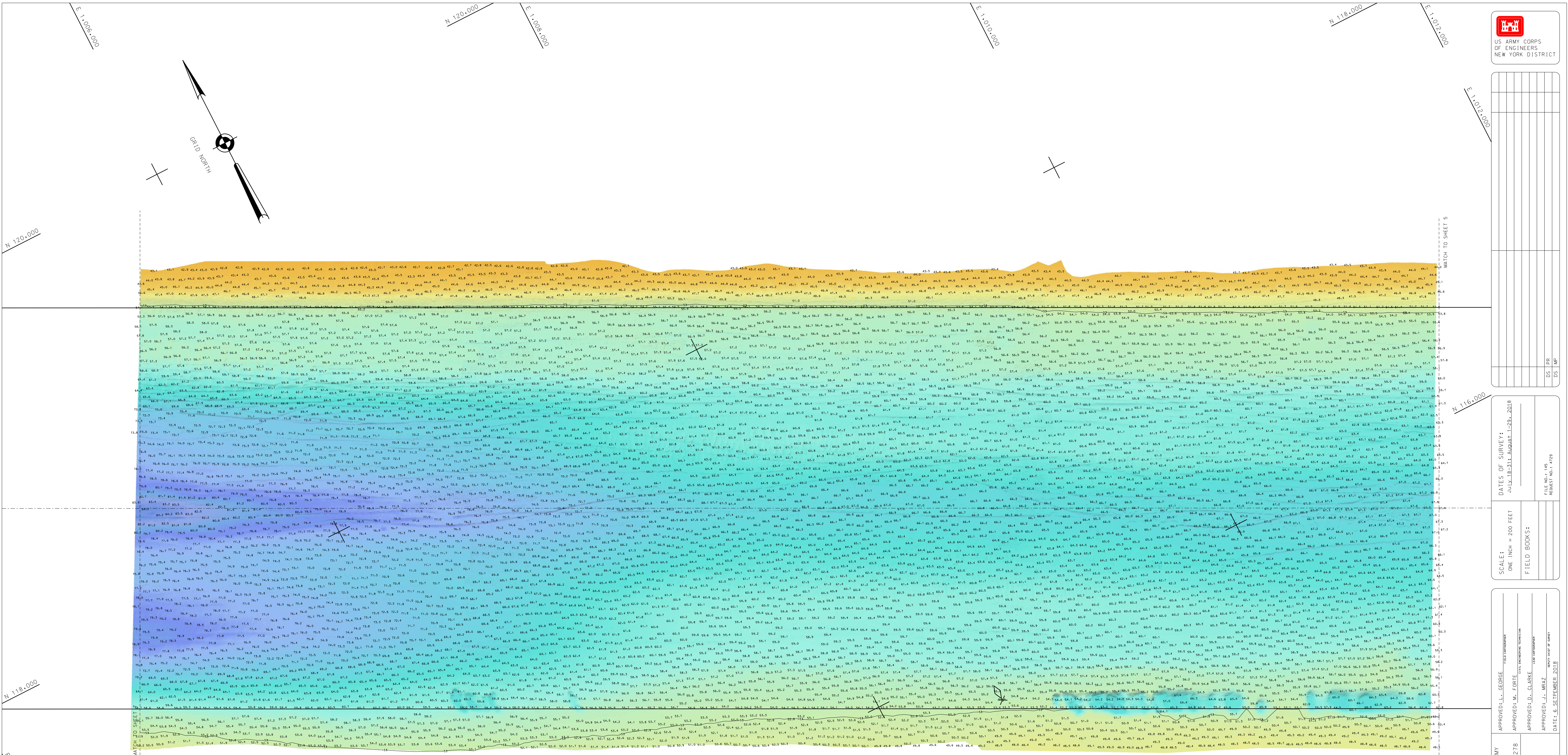
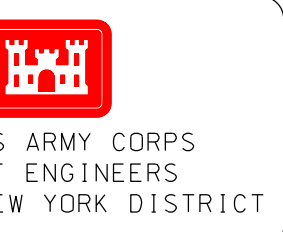


Table with 2 columns: DATE, DESCRIPTION. Includes 'DATE OF SURVEY' and 'FIELD BOOKS'.

Table with 2 columns: APPROVED, DATE. Includes 'APPROVED - L. GEORGE' and 'APPROVED - M. EHRLE'.

Table with 2 columns: APPROVED, DATE. Includes 'APPROVED - J. CLERKE' and 'APPROVED - J. MARZ'.

Table with 2 columns: APPROVED, DATE. Includes 'APPROVED - L. GEORGE' and 'APPROVED - M. EHRLE'.

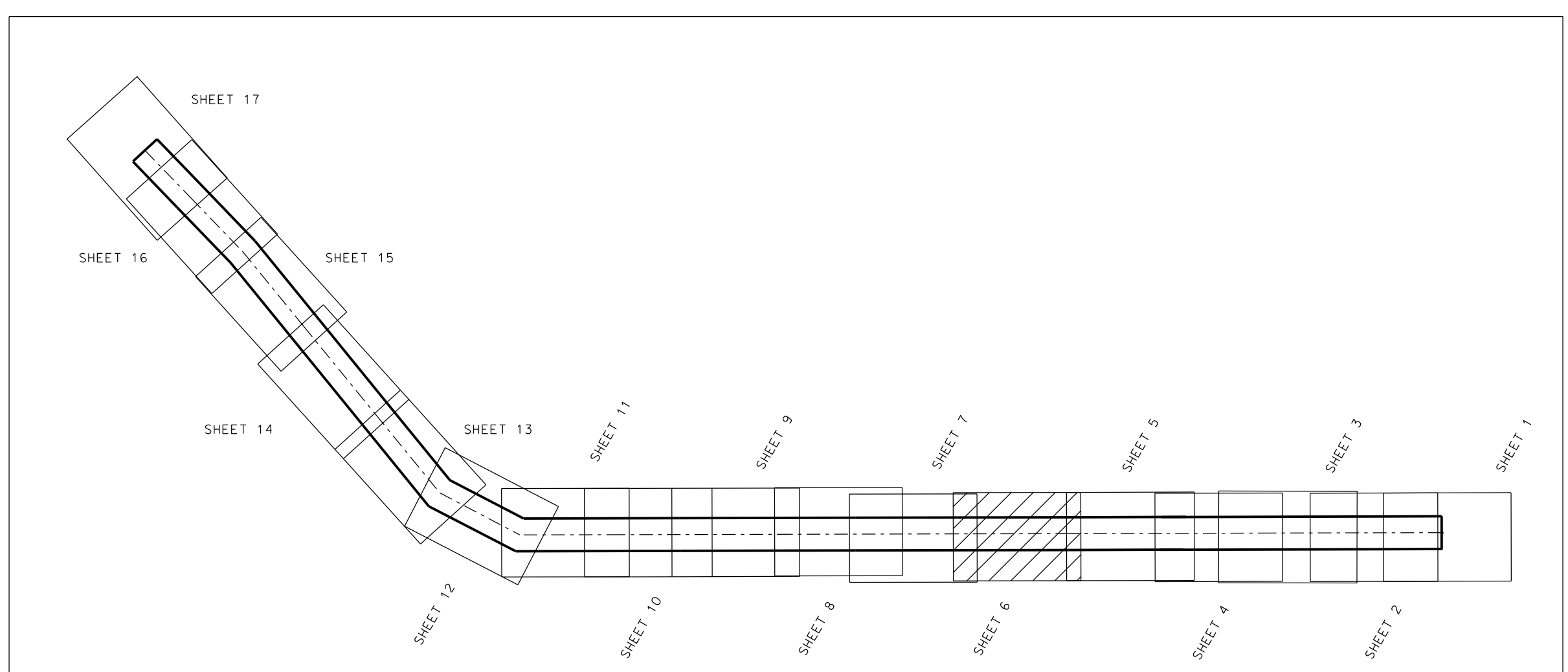


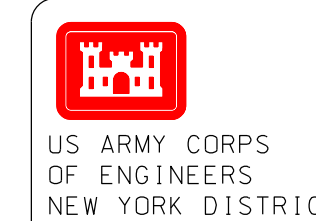
Table with 2 columns: BENCHMARK, LOCAL CONTROL DATA. Includes 'BENCHMARK: SIMPSON 2 (IPID: K'0709)' and 'BENCHMARK: F 342 (IPID: KUI257)'.

PROJECT SPECIFIC NOTES: -THE INFORMATION DEPICTED ON THIS MAP REPRESENTS THE RESULTS OF SURVEYS MADE ON THE DATES INDICATED AND CAN ONLY BE CONSIDERED AS THE GENERAL CONDITIONS EXISTING AT THAT TIME.

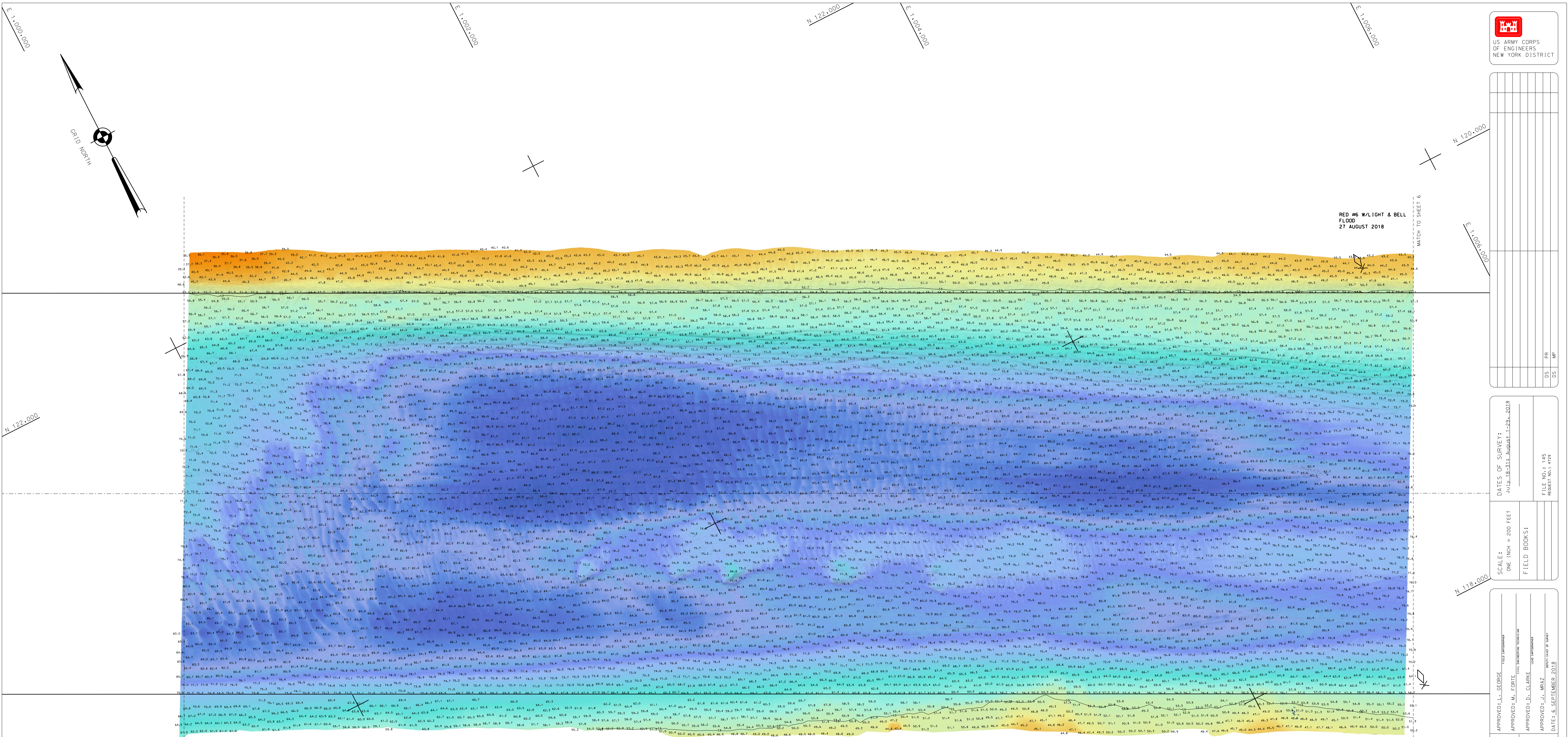
GREEN #3 W/LIGHT FLOOD 2 AUGUST 2018

NEW YORK HARBOR AMBROSE CHANNEL CONDITION SURVEY

VH-106 SHEET 6 OF 17



US ARMY CORPS OF ENGINEERS NEW YORK DISTRICT



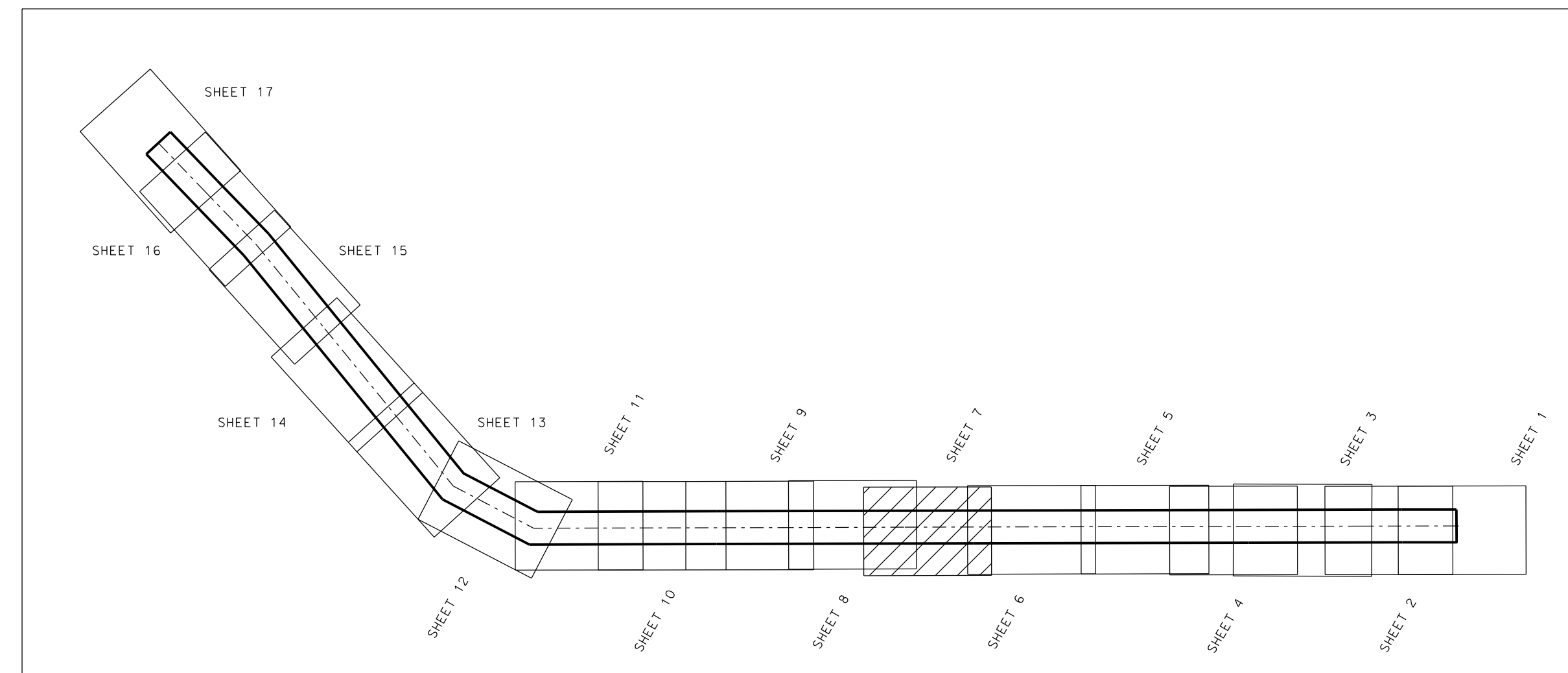
RED #6 W/LIGHT & BELL
FLOOD
27 AUGUST 2018

GREEN #5 W/LIGHT
FLOOD
27 AUGUST 2018

Table with columns for DATE OF SURVEY, SCALE, FIELD BOOKS, and FILE NO.

Table with columns for APPROVED BY, DATE, and TITLE for various roles.

Table with columns for APPROVED BY, DATE, and TITLE for various roles.



SHEET LAYOUT - NOT TO SCALE

Table with columns for NSRS BENCHMARK and LOCAL CONTROL DATA.



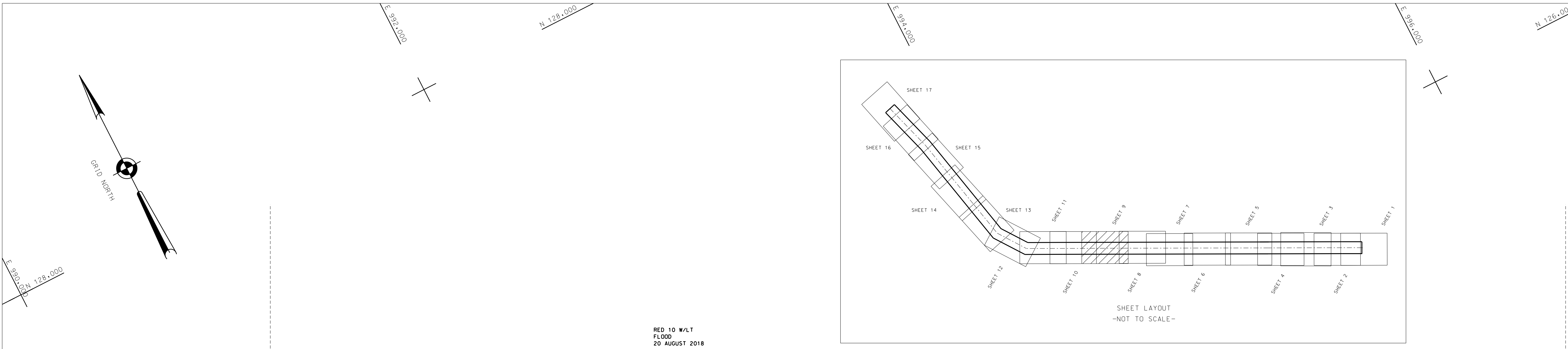
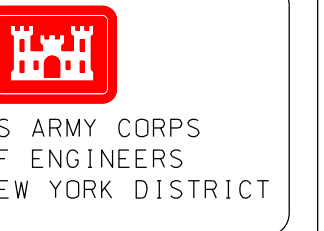
4729 PROJECT METADATA

CLICK ON ICON TO OPEN

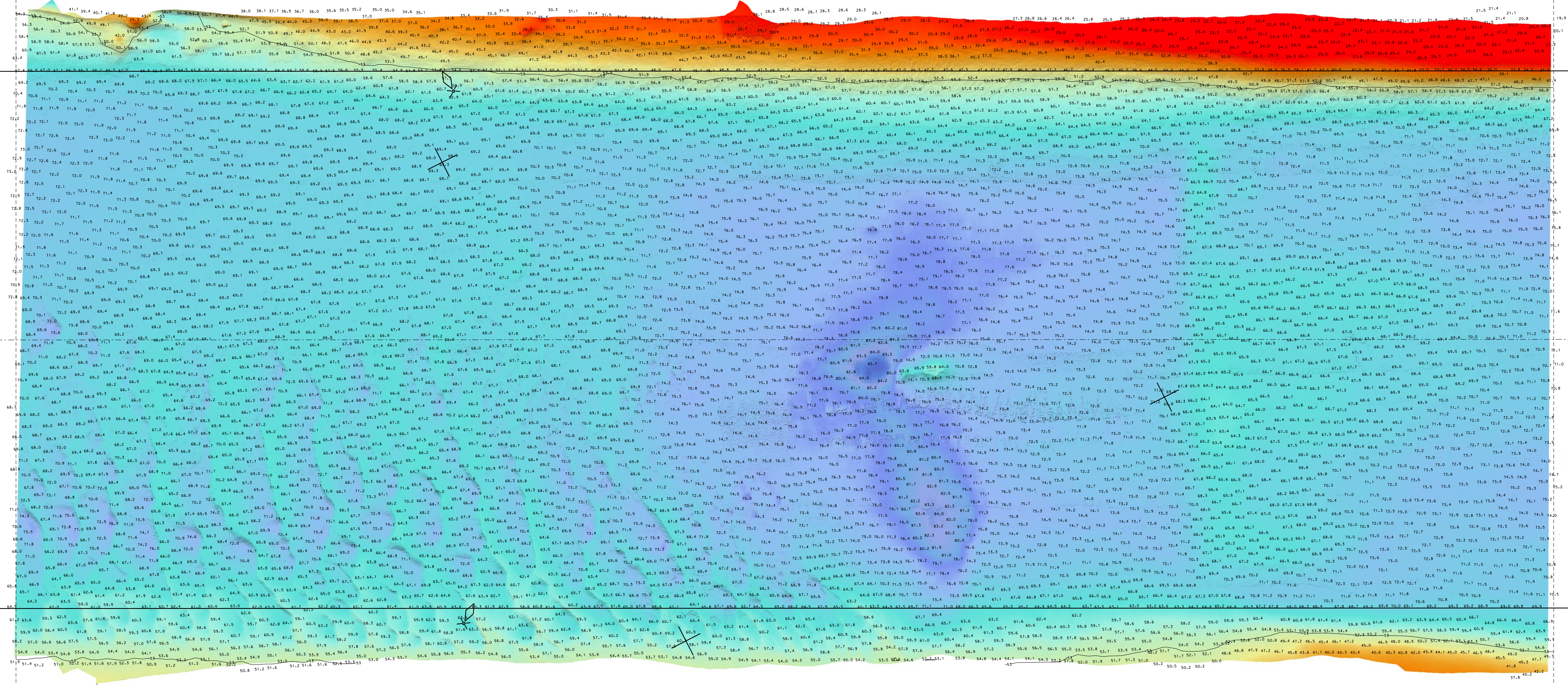
PROJECT SPECIFIC NOTES:
- THE INFORMATION DEPICTED ON THIS MAP REPRESENTS THE RESULTS OF SURVEYS MADE ON THE DATES INDICATED AND CAN ONLY BE CONSIDERED AS THE GENERAL CONDITIONS EXISTING AT THAT TIME.
- THE SOUNDINGS ON THIS MAP MEET EN 1110-2-1003 ACCURACY STANDARDS.
- COORDINATES REFER TO US STATE PLANE COORDINATE SYSTEM NAD 1983, LONG ISLAND LAMBERT - ZONE 3104, US SURVEY FEET.
- SOUNDINGS ON THIS MAP REFER TO THE PLANE OF MEAN LOWER LOW WATER (MLLW) [EPOCH 1985-2001].
- MEAN LOWER LOW WATER IS 2.7-2.8 FEET BELOW NAVD88 AS DETERMINED USING VDATUM (VER. 3.01).
- SOUNDINGS DEPICTED ON THIS MAP ARE BASED ON A 3' x 3' MEDIAN CELL, SORTED TO A 45' INTERVAL.
- CONTOURS ON THIS MAP WERE GENERATED USING THE MAP DATA SET.
- THE DATA DEPICTED ON THIS MAP SHOULD NOT BE USED FOR VOLUME CALCULATION PURPOSES.
- THIS SURVEY WAS PERFORMED USING REAL TIME KINEMATIC GPS FROM STATION "SIMPSON 2 RM 3.NPS SANDY HOOK, BAY-NY DOT RTN".
- THIS MAP IS CEPD COMPLIANT IN ACCORDANCE WITH ER 1110-2-8160 AND EN 1110-2-6056.

NEW YORK HARBOR
AMBROSE CHANNEL
CONDITION SURVEY

VH-107
SHEET 7 OF 17



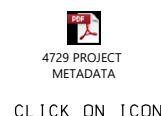
RED 10 W/LT
FLOOD
20 AUGUST 2018



GREEN 9 W/LT
EBB
20 AUGUST 2018

MATCH TO SHEET 10

NSRS BENCHMARK	
BENCHMARK:	SIMPSON 2 (PID: KV0709)
ELEVATION:	6.92' (NAVD 1988)
LOCAL CONTROL DATA	
BENCHMARK:	F 342 (PID: KUI257)
ELEVATION:	14.37' (NAVD 1988)



CLICK ON ICON
EDGE TO OPEN

- PROJECT SPECIFIC NOTES:
- THE INFORMATION DEPICTED ON THIS MAP REPRESENTS THE RESULTS OF SURVEYS MADE ON THE DATES INDICATED AND CAN ONLY BE CONSIDERED AS THE GENERAL CONDITIONS EXISTING AT THAT TIME.
 - THE SOUNDINGS ON THIS MAP MEET EM 1110-2-1003 ACCURACY STANDARDS.
 - COORDINATES REFER TO US STATE PLANE COORDINATE SYSTEM NAD 1983, LONG ISLAND LAMBERT - ZONE 3104, US SURVEY FEET.
 - SOUNDINGS ON THIS MAP REFER TO THE PLANE OF MEAN LOWER LOW WATER (MLLW) [EPOCH 1983-2001].
 - MEAN LOWER LOW WATER IS 2.7-2.8 FEET BELOW NAVD88 AS DETERMINED USING VDATUM (VER, 3.0).
 - SOUNDINGS DEPICTED ON THIS MAP ARE BASED ON A 3" X 3" MEDIAN CELL, SORTED TO A 45° INTERVAL.
 - CONTOURS ON THIS MAP WERE GENERATED USING THE MAP DATA SET.
 - THE DATA DEPICTED ON THIS MAP SHOULD NOT BE USED FOR VOLUME CALCULATION PURPOSES.
 - THIS SURVEY WAS PERFORMED USING REAL TIME KINEMATIC GPS FROM STATION "SIMPSON 2 RM 3-NPS SANDY HOOK/BAY-NY DOT RTN".
 - THIS MAP IS CEPD COMPLIANT IN ACCORDANCE WITH EM 1110-2-8160 AND EM 1110-2-6056.

DATE OF SURVEY: JULY-BESSIE August-1-2018-2018
FILE NO.: 145
REQUEST NO.: 4729

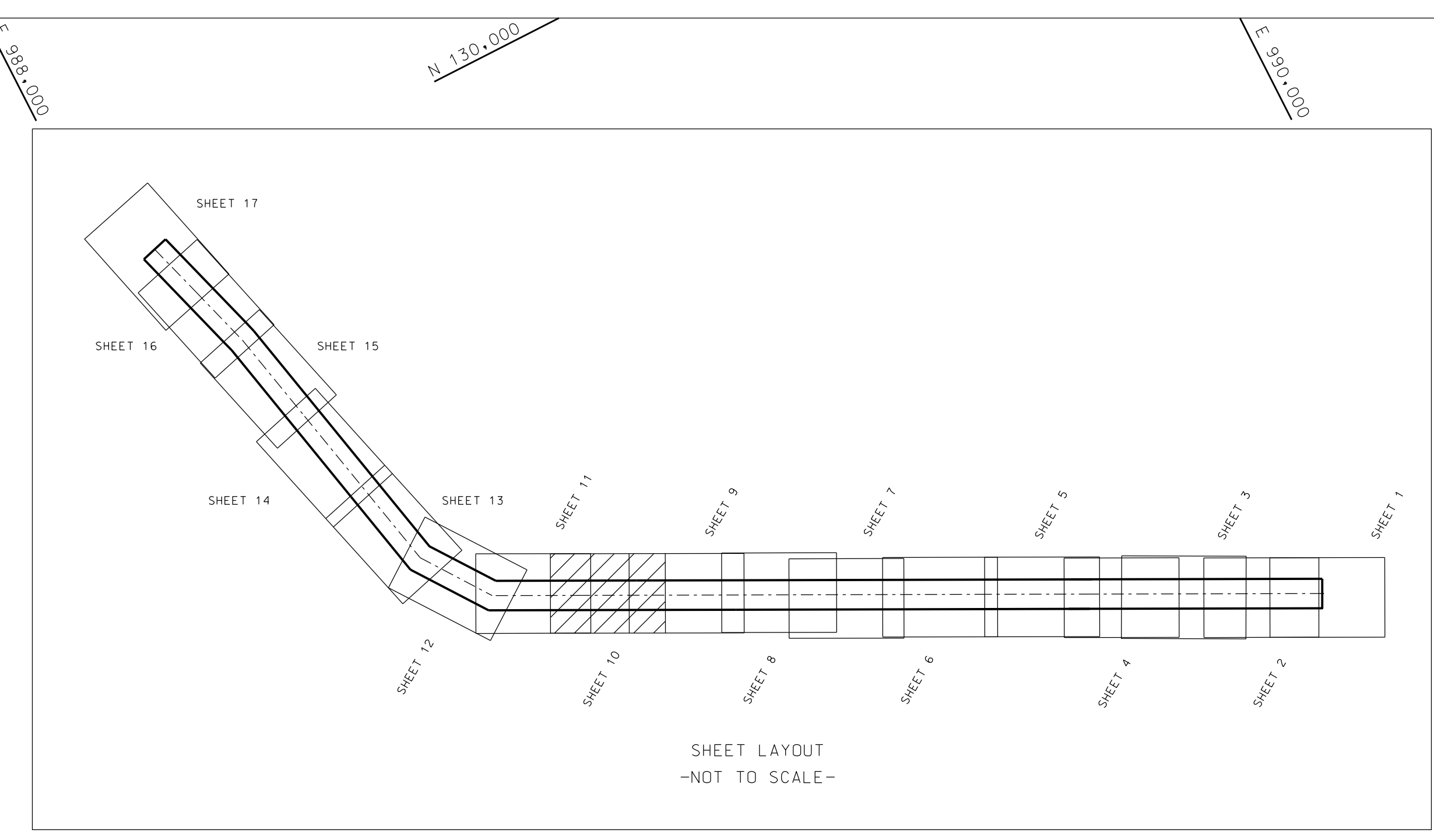
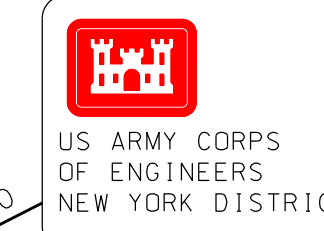
SCALE: ONE INCH = 500 FEET
FIELD BOOKS:

APPROVED: L. GEORGE	EXT. SUPERVISOR
APPROVED: M. FORTIE	EXT. SUPERVISOR
APPROVED: L. MARZ	EXT. SUPERVISOR
DATE: 8 SEPTEMBER 2018	

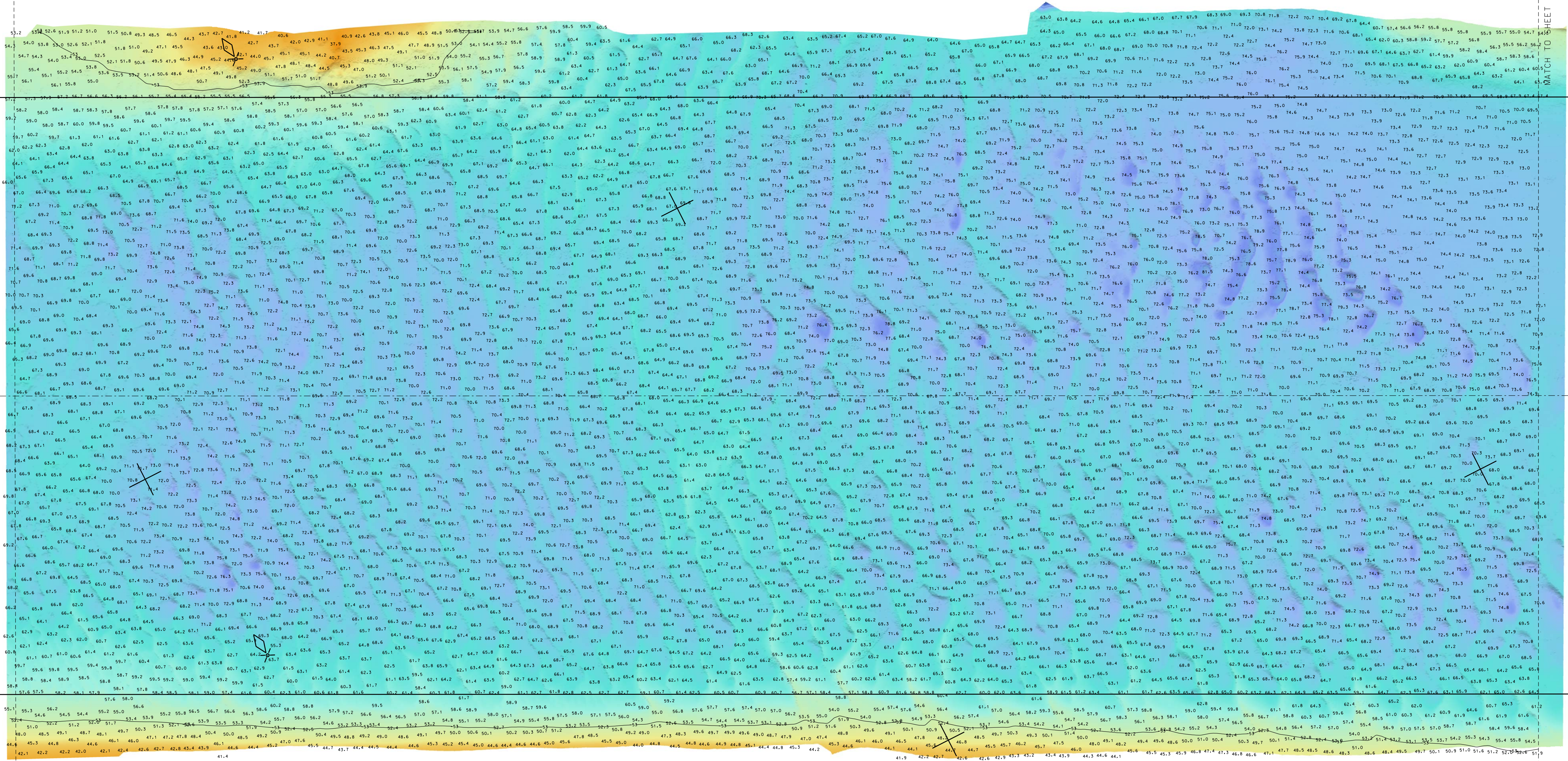
DEPARTMENT OF THE ARMY
NEW YORK DISTRICT
NEW YORK - NEW YORK 10278

OPERATIONS DIVISION
SURVEY SECTION
CERRANOPS

NEW YORK HARBOR
AMBROSE CHANNEL
CONDITION SURVEY



RED 12 W/L FLOOD 17 AUGUST 2018



GREEN 11 W/L FLOOD 17 AUGUST 2018

NSRS BENCHMARK BENCHMARK: SIMPSON 2 (PID: KV0709) ELEVATION: 6.32' (NAVD 1988)

LOCAL CONTROL DATA BENCHMARK: F 342 (PID: KU1257) ELEVATION: 14.37' (NAVD 1988)

- PROJECT SPECIFIC NOTES: -THE INFORMATION DEPICTED ON THIS MAP REPRESENTS THE RESULTS OF SURVEYS MADE ON THE DATES INDICATED AND CAN ONLY BE CONSIDERED AS THE GENERAL CONDITIONS EXISTING AT THAT TIME. -THE SOUNDINGS ON THIS MAP MEET EM 1110-2-1003 ACCURACY STANDARDS. -COORDINATES REFER TO US STATE PLANE COORDINATE SYSTEM NAD 1983, LONG ISLAND LAMBERT - ZONE 3104, US SURVEY FEET. -SOUNDINGS ON THIS MAP REFER TO THE PLANE OF MEAN LOWER LOW WATER (MELLW) [EPOCH 1985-2001]. -MEAN LOWER LOW WATER IS 2.7-2.8 FEET BELOW NAVD88 AS DETERMINED USING VDATUM (VER. 3.0). -SOUNDINGS DEPICTED ON THIS MAP ARE BASED ON A 3' x 3' MEDIAN CELL, SORTED TO A 45' INTERVAL. -CONTOURS ON THIS MAP WERE GENERATED USING THE MAP DATA SET. -THE DATA DEPICTED ON THIS MAP SHOULD NOT BE USED FOR VOLUME CALCULATION PURPOSES. -THIS SURVEY WAS PERFORMED USING REAL TIME KINEMATIC GPS FROM STATION "SIMPSON 2 RM 3.NPS SANDY HOOK, BAY, NY DOT RTN". -THIS MAP IS CEPD COMPLIANT IN ACCORDANCE WITH EM 1110-2-8160 AND EM 1110-2-6056.

Table with columns for revision, date, and description.

DATES OF SURVEY: JULY-18-2018, AUGUST-17-2018, 2018

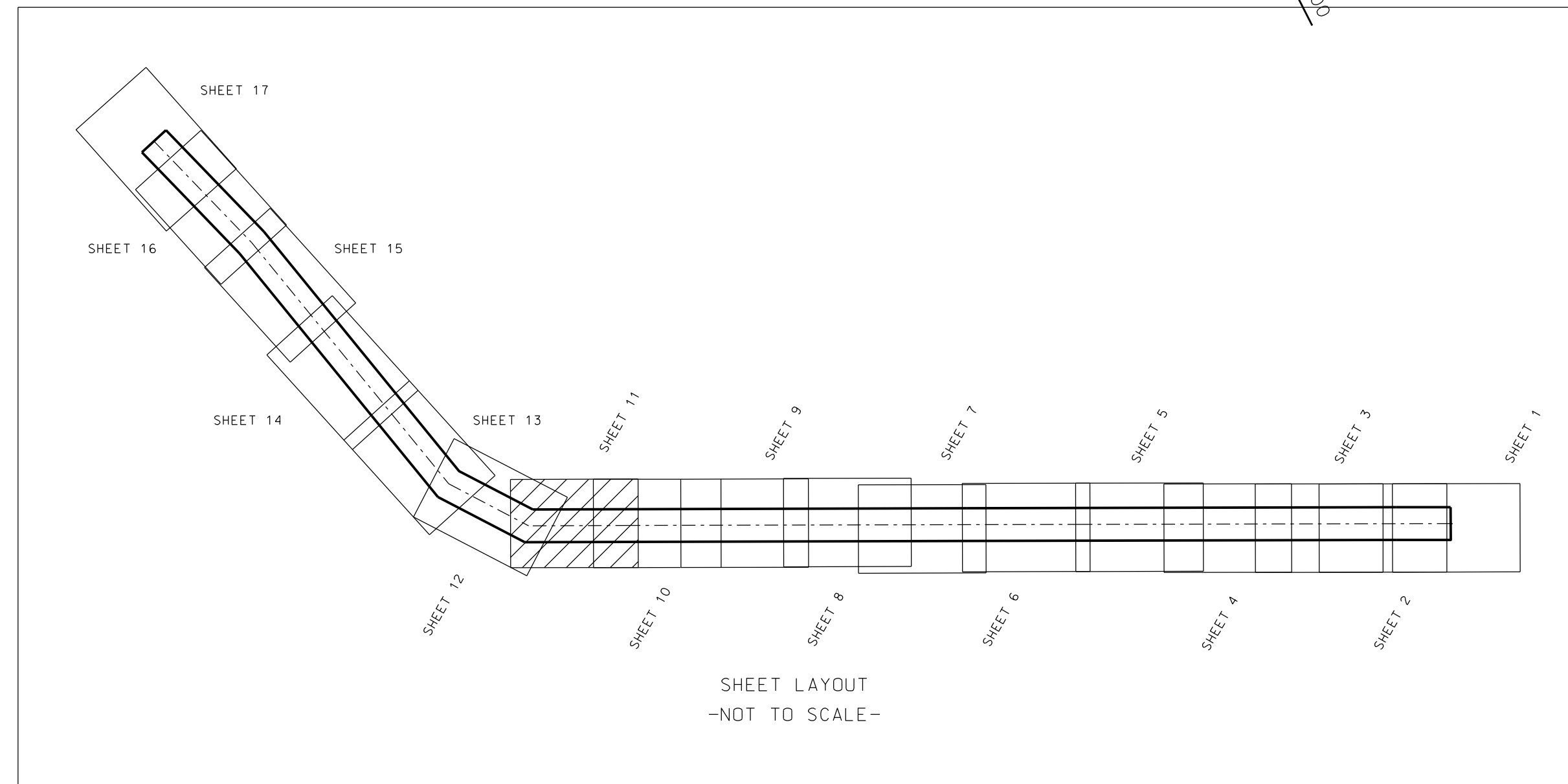
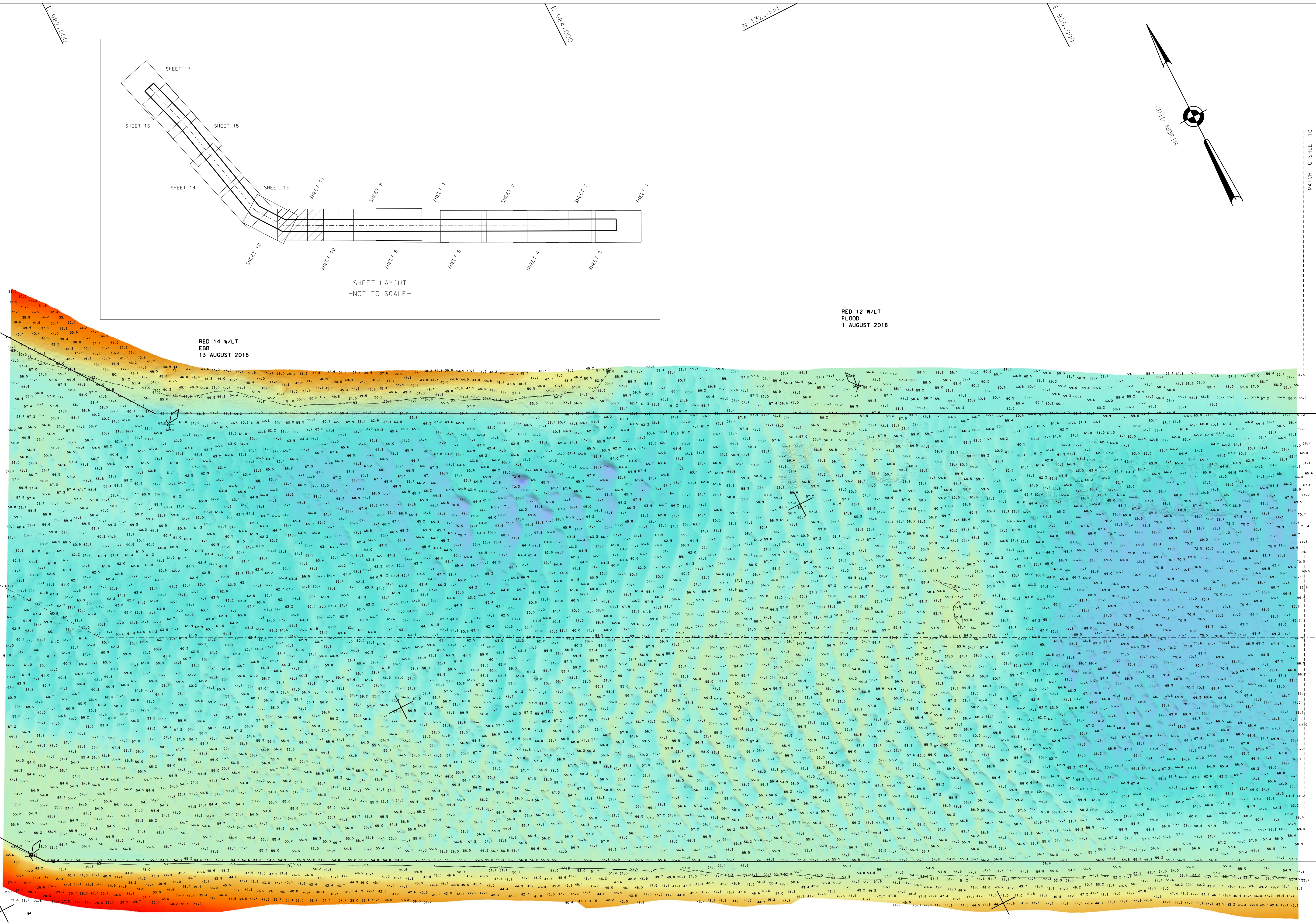
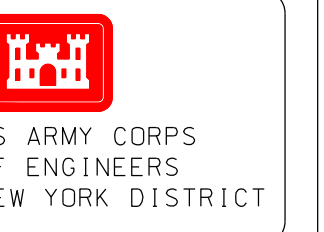
SCALE: ONE INCH = 200 FEET FIELD BOOKS:

APPROVED: L. GEORGE (SUPERVISOR) APPROVED: M. FORBE (CHIEF SURVEYOR) APPROVED: J. CLARKE (SURVEY ENGINEER) APPROVED: J. MBAB (CHIEF OF PARTY) DATE: 6 SEPTEMBER 2018

DEPARTMENT OF THE ARMY NEW YORK DISTRICT CORPS OF ENGINEERS NEW YORK, NEW YORK 10278 OPERATIONS DIVISION SURVEY SECTION CROWN OPS

NEW YORK HARBOR AMBROSE CHANNEL CONDITION SURVEY

VH-110 SHEET 10 OF 17



**RED 14 W/LT
EBB
13 AUGUST 2018**

**RED 12 W/LT
FLOOD
1 AUGUST 2018**

**GREEN CAN #13
EBB
13 AUGUST 2018**

NSRS BENCHMARK	
BENCHMARK: SIMPSON 2 (PID: KV0709)	ELEVATION: 6.92' (NAVD 1988)
LOCAL CONTROL DATA	
BENCHMARK: F 342 (PID: KU1257)	ELEVATION: 14.37' (NAVD 1988)

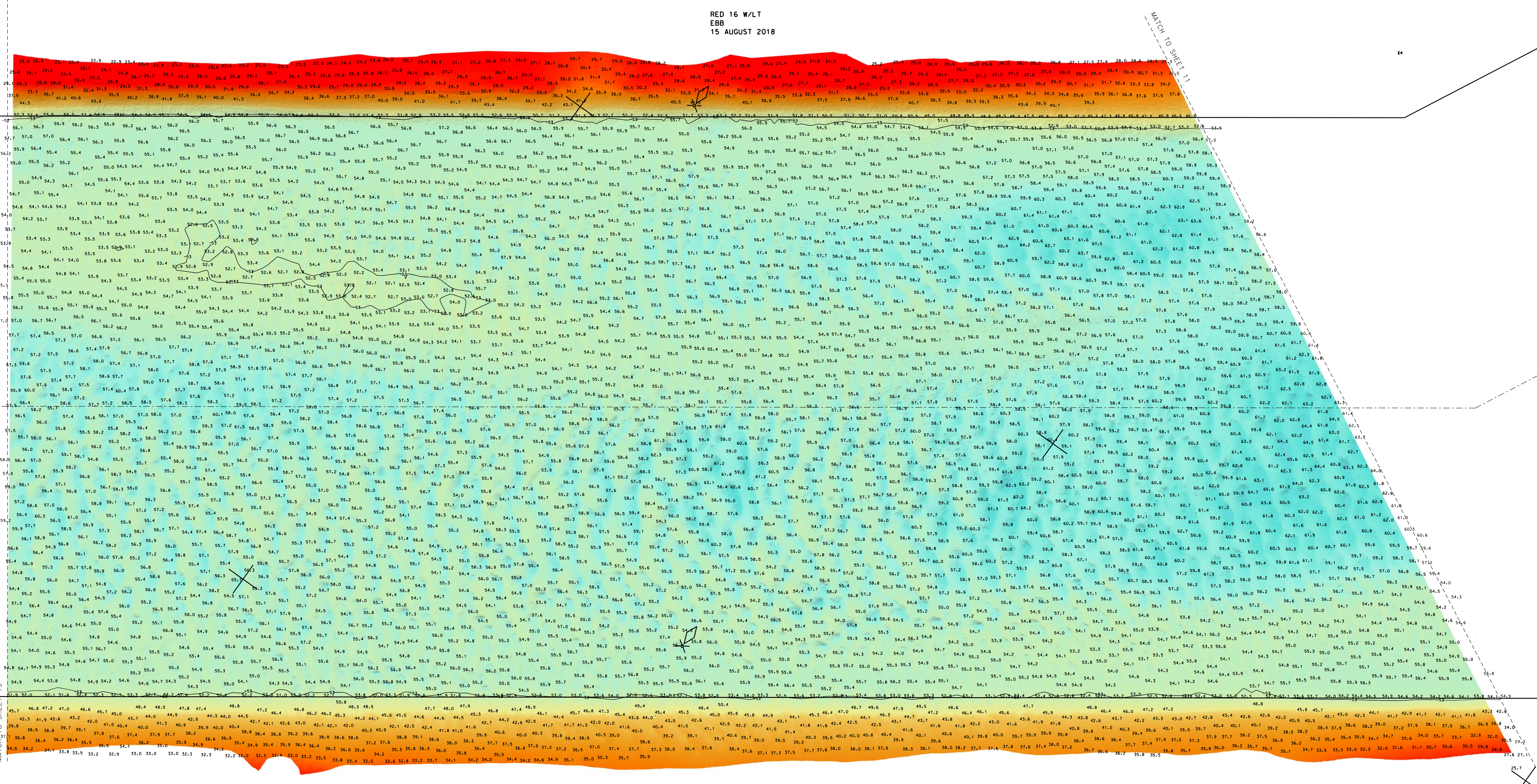
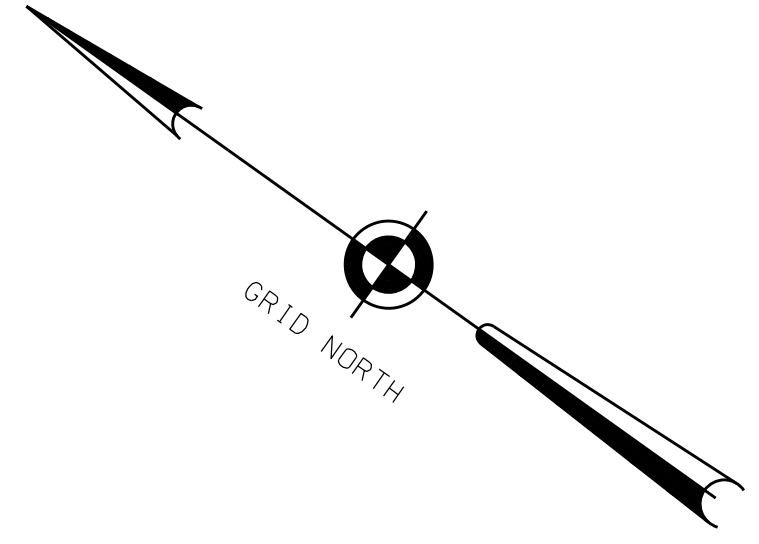
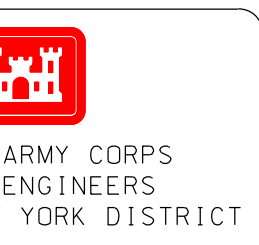
- PROJECT SPECIFIC NOTES:**
- THE INFORMATION DEPICTED ON THIS MAP REPRESENTS THE RESULTS OF SURVEYS MADE ON THE DATES INDICATED AND CAN ONLY BE CONSIDERED AS THE GENERAL CONDITIONS EXISTING AT THAT TIME.
 - THE SOUNDINGS ON THIS MAP MEET EM 1110-2-1003 ACCURACY STANDARDS.
 - COORDINATES REFER TO US STATE PLANE COORDINATE SYSTEM NAD83, LONG ISLAND LAMBERT - ZONE 3104, US SURVEY FEET.
 - SOUNDINGS ON THIS MAP REFER TO THE PLANE OF MEAN LOWER LOW WATER (MLLW) [FPOH 1983-200].
 - MEAN LOWER LOW WATER IS 2.7-2.8 FEET BELOW NAVD88 AS DETERMINED USING VDATUM IVER, 3.0.I.
 - SOUNDINGS DEPICTED ON THIS MAP ARE BASED ON A 3' x 3' MEDIAN CELL, SORTED TO A 45' INTERVAL.
 - CONTOURS ON THIS MAP WERE GENERATED USING THE MAP DATA SET.
 - THE DATA DEPICTED ON THIS MAP SHOULD NOT BE USED FOR VOLUME CALCULATION PURPOSES.
 - THIS SURVEY WAS PERFORMED USING REAL TIME KINEMATIC GPS FROM STATION "SIMPSON 2 RM 3.NPS SANDY HOOK.BAY.NY DOT RTRN".
 - THIS MAP IS ICPD COMPLIANT IN ACCORDANCE WITH ER 1110-2-8160 AND EM 1110-2-6056.

DATE OF SURVEY:	JULY-REELI-AMUND-1228-2018
SCALE:	ONE INCH = 200 FEET
FIELD BOOKS:	
FILE NO.:	145
REQUEST NO.:	4729
DATE:	6 SEPTEMBER 2018

APPROVED: L. GEORGE	DATE: 6 SEPTEMBER 2018
APPROVED: M. FERRE	
APPROVED: D. CLARKE	
APPROVED: J. BRAZ	

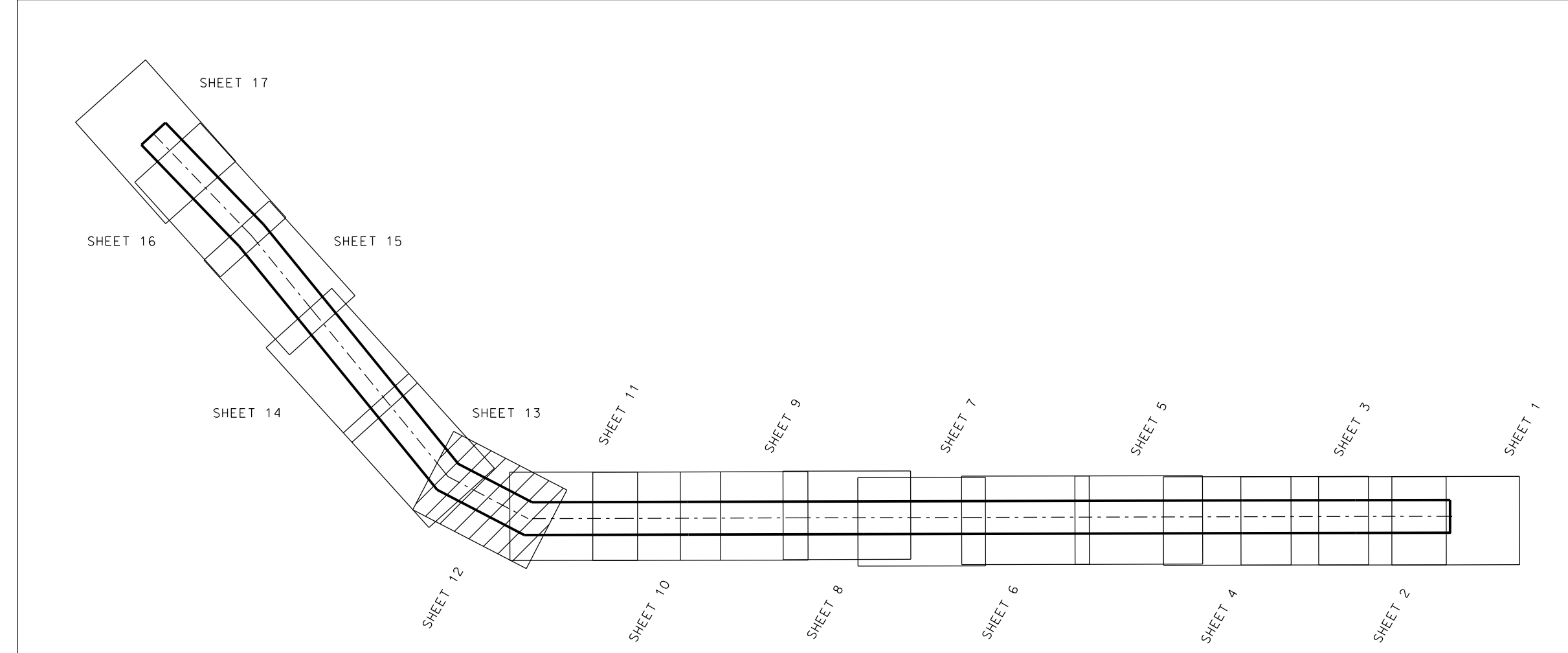
DEPARTMENT OF THE ARMY NEW YORK DISTRICT NEW YORK, NEW YORK 10278	OPERATIONS DIVISION SURVEY SECTION CHARTERS
NEW YORK HARBOR AMERSE CHANNEL	CONDITION SURVEY

VH-111
SHEET 11 OF 17



RED 16 W/LT
EBB
15 AUGUST 2018

GREEN 15 W/LT
EBB
13 AUGUST 2018



SHEET LAYOUT
-NOT TO SCALE-

NSRS BENCHMARK	
BENCHMARK: SIMPSON 2 (PID: KV0709)	
ELEVATION: 6.92' (NAVD 1988)	

LOCAL CONTROL DATA	
BENCHMARK: F 342 (PID: KU1257)	
ELEVATION: 14.37' (NAVD 1988)	



CLICK ON ICON
EDGE TO OPEN

PROJECT SPECIFIC NOTES:

- THE INFORMATION DEPICTED ON THIS MAP REPRESENTS THE RESULTS OF SURVEYS MADE ON THE DATES INDICATED AND CAN ONLY BE CONSIDERED AS THE GENERAL CONDITIONS EXISTING AT THAT TIME.
- THE SOUNDINGS ON THIS MAP MEET EMB 1110-2-1003 ACCURACY STANDARDS.
- COORDINATES REFER TO US STATE PLANE COORDINATE SYSTEM NAD 1983, LONG ISLAND LAMBERT - ZONE 3104, US SURVEY FEET.
- SOUNDINGS ON THIS MAP REFER TO THE PLANE OF MEAN LOWER LOW WATER (MLLW) [EPOCH 1983-2001].
- MEAN LOWER LOW WATER IS 2.7-2.8 FEET BELOW NAVD80 AS DETERMINED USING VDATUM (VER. 3.01).
- SOUNDINGS DEPICTED ON THIS MAP ARE BASED ON A 3' x 3' MEDIAN CELL, SORTED TO A 45° INTERVAL.
- CONTOURS ON THIS MAP WERE GENERATED USING THE MAP DATA SET.
- THE DATA DEPICTED ON THIS MAP SHOULD NOT BE USED FOR VOLUME CALCULATION PURPOSES.
- THIS SURVEY WAS PERFORMED USING REAL TIME KINEMATIC GPS FROM STATION "SIMPSON 2 RM 3NPS SANDY HOOK, BAY-NY DOT RTN".
- THIS MAP IS CEPP COMPLIANT IN ACCORDANCE WITH EMB 1110-2-8160 AND EMB 1110-2-6056.

DATE OF SURVEY:	DATE OF SURVEY:	FILE NO.:	REQUEST NO.:
JUL2018	AUGUST 15, 2018	145	4729

SCALE:	FIELD BOOKS:
ONE INCH = 200 FEET	

APPROVED:	DATE:
L. GEORGE	8 SEPTEMBER 2018

DEPARTMENT OF THE ARMY	OPERATIONS DIVISION
NEW YORK DISTRICT	SURVEY SECTION
NEW YORK, NEW YORK 10278	CGSCN-OP-6

NEW YORK HARBOR	CONDITION SURVEY
AMBROSE CHANNEL	

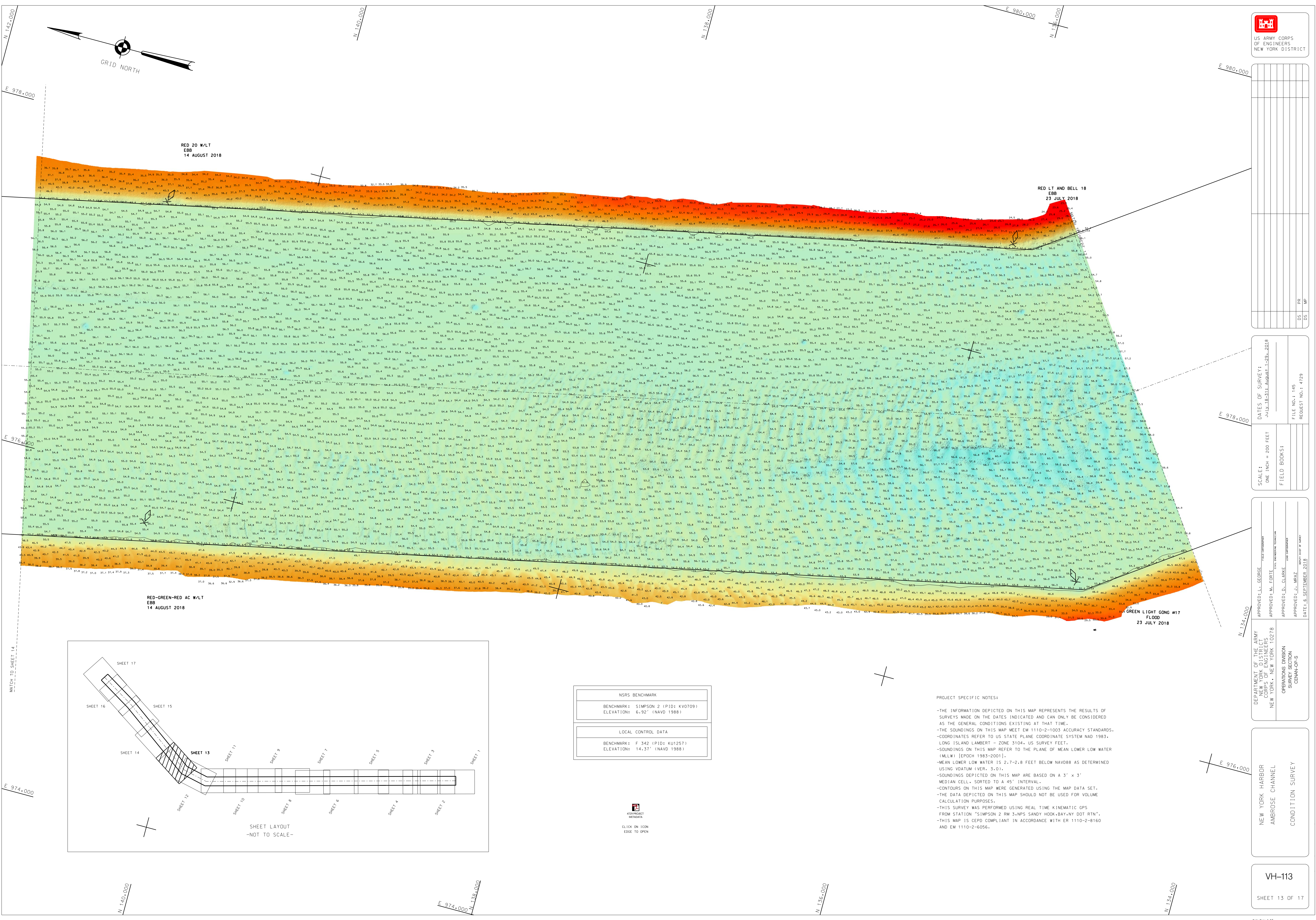
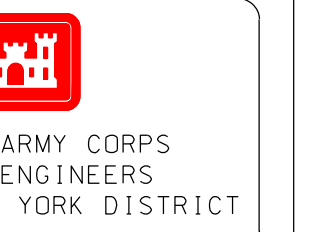


Table with 2 columns: DS, MP. Rows contain numerical data for different survey points.

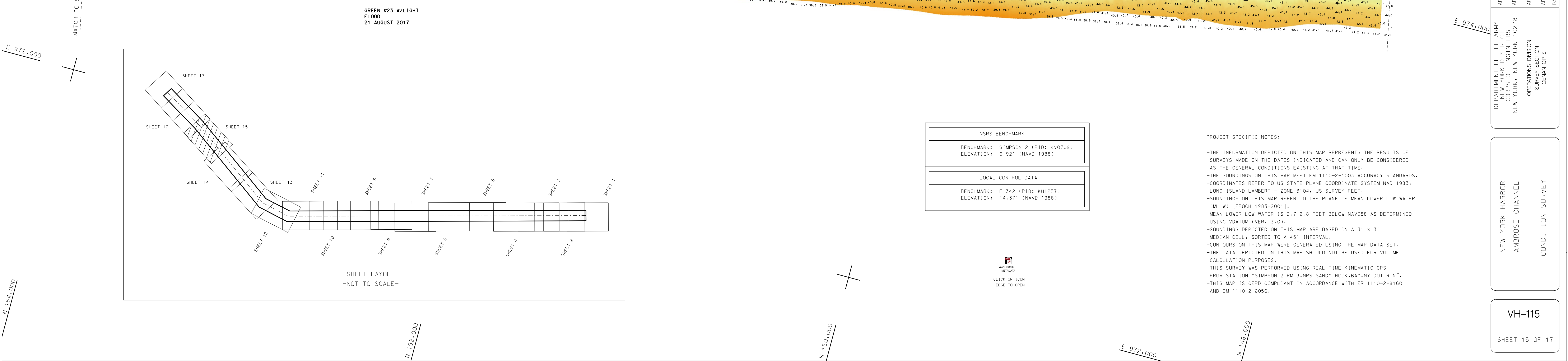
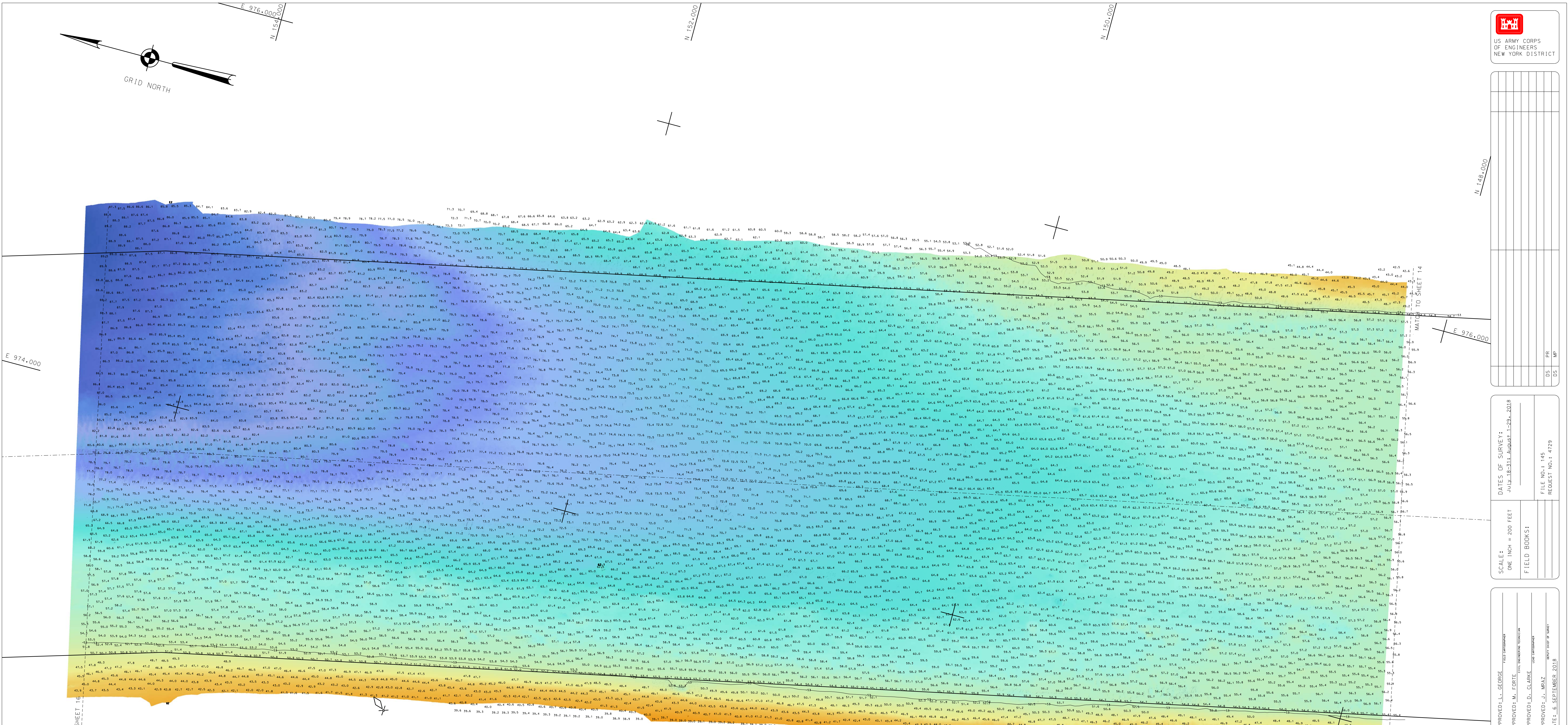
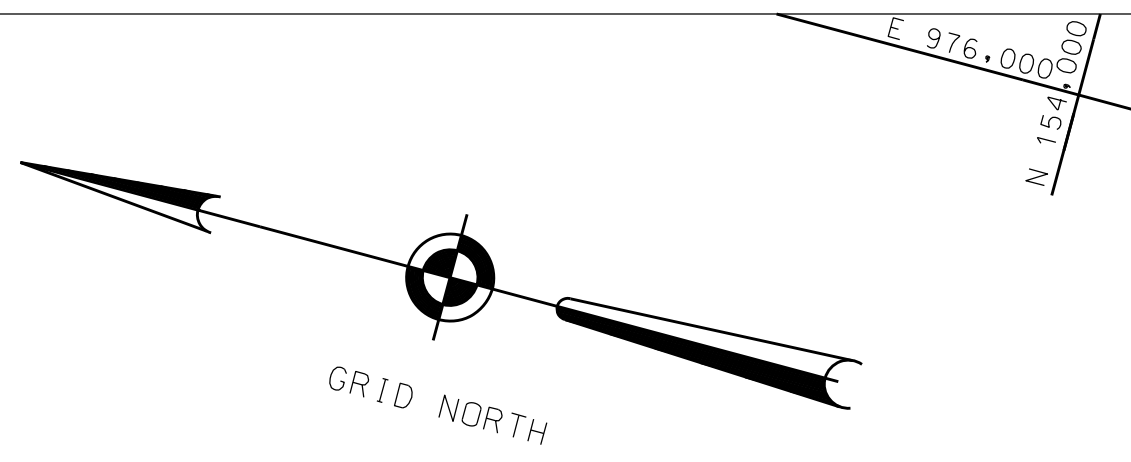
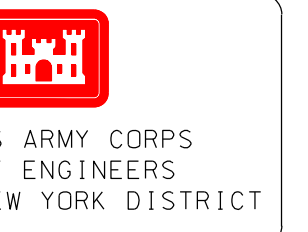
Table with 2 columns: FIELD BOOKS, FILE NO. 145, REQUEST NO. 1479. Rows contain numerical data.

Table with 2 columns: APPROVED BY, DATE. Rows list names and dates: GEORGE (10/17/2018), M. EDIE (10/17/2018), CLIBRE (10/17/2018), MRAZ (10/17/2018).

DEPARTMENT OF THE ARMY
NEW YORK DISTRICT
NEW YORK, NEW YORK 10278

OPERATIONS DIVISION
SURVEY SECTION
GENA-OPS

NEW YORK HARBOR
AMBROSE CHANNEL
CONDITION SURVEY



NSRS BENCHMARK	
BENCHMARK: SJMPSON 2 (PID: KV0709)	ELEVATION: 6.92' (NAVD 1988)
LOCAL CONTROL DATA	
BENCHMARK: F 342 (PID: KUI257)	ELEVATION: 14.37' (NAVD 1988)

- PROJECT SPECIFIC NOTES:
- THE INFORMATION DEPICTED ON THIS MAP REPRESENTS THE RESULTS OF SURVEYS MADE ON THE DATES INDICATED AND CAN ONLY BE CONSIDERED AS THE GENERAL CONDITIONS EXISTING AT THAT TIME.
 - THE SOUNDINGS ON THIS MAP MEET EM 1110-2-1003 ACCURACY STANDARDS.
 - COORDINATES REFER TO US STATE PLANE COORDINATE SYSTEM NAD 83, LONG ISLAND LAMBERT - ZONE 3104, US SURVEY FEET.
 - SOUNDINGS ON THIS MAP REFER TO THE PLANE OF MEAN LOWER LOW WATER (MLLW) [EPOCH 1983-2001].
 - MEAN LOWER LOW WATER IS 2.7-2.8 FEET BELOW NAVD88 AS DETERMINED USING DATUM YEAR - 3-01.
 - SOUNDINGS DEPICTED ON THIS MAP ARE BASED ON A 3' x 3' MEDIAN CELL, SORTED TO A 45° INTERVAL.
 - CONTOURS ON THIS MAP WERE GENERATED USING THE MAP DATA SET.
 - THE DATA DEPICTED ON THIS MAP SHOULD NOT BE USED FOR VOLUME CALCULATION PURPOSES.
 - THIS SURVEY WAS PERFORMED USING REAL TIME KINEMATIC GPS USING DATUM YEAR - 3-01.
 - THIS MAP IS CEPO COMPLIANT IN ACCORDANCE WITH EM 1110-2-8160 AND EM 1110-2-6056.

DATE OF SURVEY:	JULY-SEPTEMBER 2018
FILE NO.:	145
REQUEST NO.:	4729
DATE:	SEPTEMBER 2018

SCALE:	ONE INCH = 200 FEET
FIELD BOOKS:	

APPROVED:	L. GEORGE	DATE:	SEPTEMBER 2018
APPROVED:	M. EDRIE	DATE:	SEPTEMBER 2018
APPROVED:	D. CLARKE	DATE:	SEPTEMBER 2018
APPROVED:	J. MARZ	DATE:	SEPTEMBER 2018

DEPARTMENT OF THE ARMY
CORPS OF ENGINEERS
NEW YORK, NEW YORK 10278

OPERATIONS DIVISION
NEW YORK HARBOR
AMBROSE CHANNEL
CONDITION SURVEY

NEW YORK HARBOR
AMBROSE CHANNEL
CONDITION SURVEY

VH-115

SHEET 15 OF 17

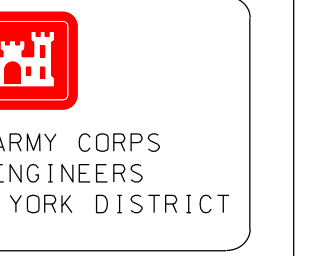


Table with 12 columns and 2 rows, likely a revision log or title block details.

DATES OF SURVEY: JULY 18, 2018; AUGUST 1, 2018; SEPTEMBER 11, 2018; SEPTEMBER 18, 2018; SEPTEMBER 19, 2018; SEPTEMBER 25, 2018; SEPTEMBER 26, 2018; SEPTEMBER 27, 2018; SEPTEMBER 28, 2018; SEPTEMBER 29, 2018; SEPTEMBER 30, 2018; OCTOBER 1, 2018; OCTOBER 2, 2018; OCTOBER 3, 2018; OCTOBER 4, 2018; OCTOBER 5, 2018; OCTOBER 6, 2018; OCTOBER 7, 2018; OCTOBER 8, 2018; OCTOBER 9, 2018; OCTOBER 10, 2018; OCTOBER 11, 2018; OCTOBER 12, 2018; OCTOBER 13, 2018; OCTOBER 14, 2018; OCTOBER 15, 2018; OCTOBER 16, 2018; OCTOBER 17, 2018; OCTOBER 18, 2018; OCTOBER 19, 2018; OCTOBER 20, 2018; OCTOBER 21, 2018; OCTOBER 22, 2018; OCTOBER 23, 2018; OCTOBER 24, 2018; OCTOBER 25, 2018; OCTOBER 26, 2018; OCTOBER 27, 2018; OCTOBER 28, 2018; OCTOBER 29, 2018; OCTOBER 30, 2018; OCTOBER 31, 2018; NOVEMBER 1, 2018; NOVEMBER 2, 2018; NOVEMBER 3, 2018; NOVEMBER 4, 2018; NOVEMBER 5, 2018; NOVEMBER 6, 2018; NOVEMBER 7, 2018; NOVEMBER 8, 2018; NOVEMBER 9, 2018; NOVEMBER 10, 2018; NOVEMBER 11, 2018; NOVEMBER 12, 2018; NOVEMBER 13, 2018; NOVEMBER 14, 2018; NOVEMBER 15, 2018; NOVEMBER 16, 2018; NOVEMBER 17, 2018; NOVEMBER 18, 2018; NOVEMBER 19, 2018; NOVEMBER 20, 2018; NOVEMBER 21, 2018; NOVEMBER 22, 2018; NOVEMBER 23, 2018; NOVEMBER 24, 2018; NOVEMBER 25, 2018; NOVEMBER 26, 2018; NOVEMBER 27, 2018; NOVEMBER 28, 2018; NOVEMBER 29, 2018; NOVEMBER 30, 2018; DECEMBER 1, 2018; DECEMBER 2, 2018; DECEMBER 3, 2018; DECEMBER 4, 2018; DECEMBER 5, 2018; DECEMBER 6, 2018; DECEMBER 7, 2018; DECEMBER 8, 2018; DECEMBER 9, 2018; DECEMBER 10, 2018; DECEMBER 11, 2018; DECEMBER 12, 2018; DECEMBER 13, 2018; DECEMBER 14, 2018; DECEMBER 15, 2018; DECEMBER 16, 2018; DECEMBER 17, 2018; DECEMBER 18, 2018; DECEMBER 19, 2018; DECEMBER 20, 2018; DECEMBER 21, 2018; DECEMBER 22, 2018; DECEMBER 23, 2018; DECEMBER 24, 2018; DECEMBER 25, 2018; DECEMBER 26, 2018; DECEMBER 27, 2018; DECEMBER 28, 2018; DECEMBER 29, 2018; DECEMBER 30, 2018; DECEMBER 31, 2018

SCALE: ONE INCH = 200 FEET
FIELD BOOKS:

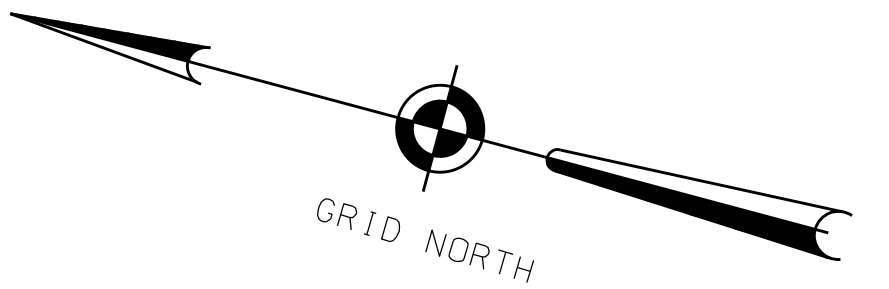
APPROVED: L. GEORGE
APPROVED: M. EORIE
APPROVED: D. CLARKE
APPROVED: J. MARZ

DEPARTMENT OF THE ARMY
CORPS OF ENGINEERS
NEW YORK, NEW YORK 10278
OPERATIONS DIVISION
SURVEY SECTION
CEMAN-OPS

NEW YORK HARBOR
AMBROSE CHANNEL
CONDITION SURVEY

VH-117

SHEET 17 OF 17



E 972.000

N 164.000

N 162.000

E 974.000

N 160.000

E 974.000

MATCH TO SHEET 16

E 970.000

E 972.000

N 158.000

E 968.000

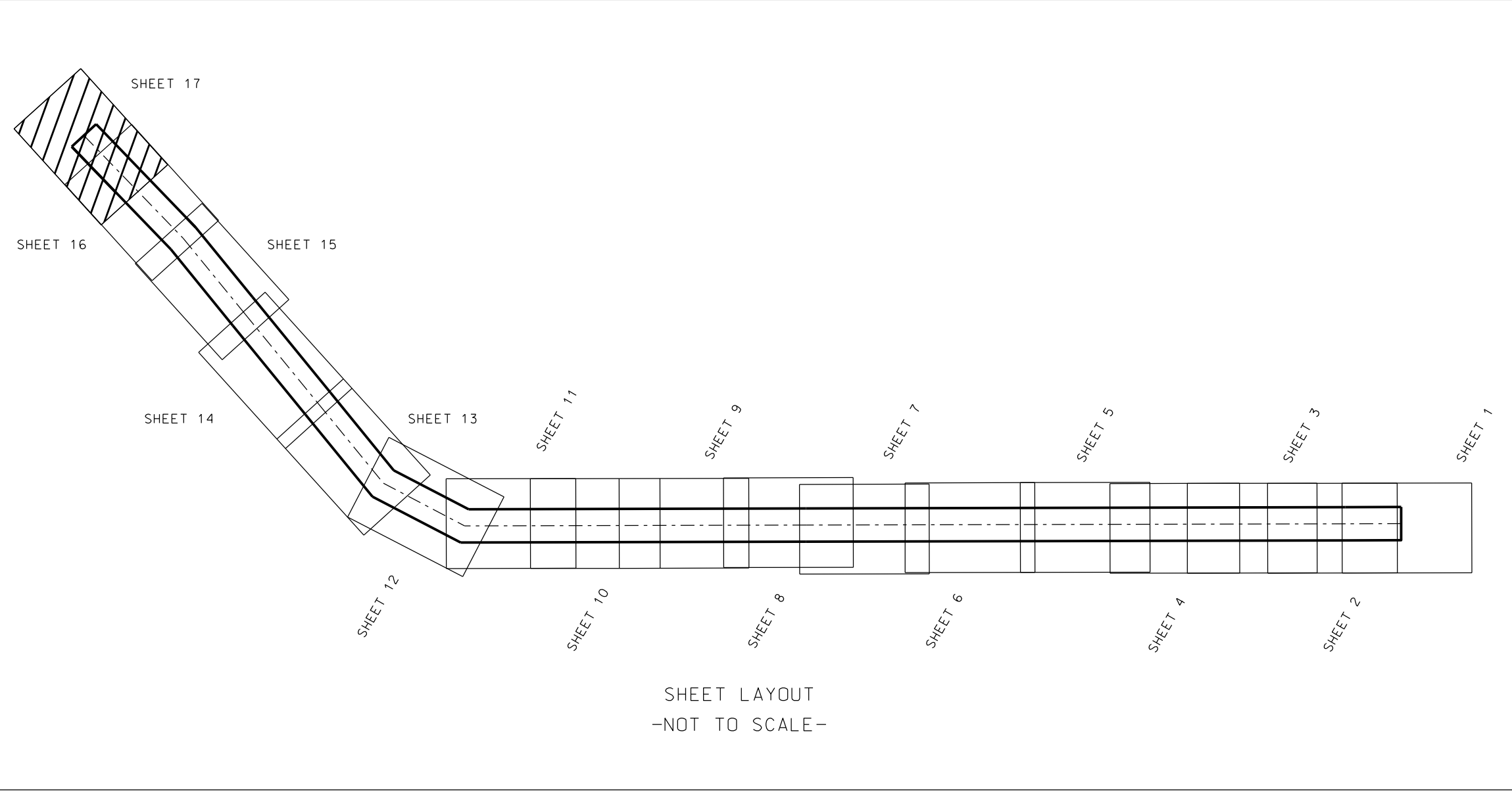
N 164.000

E 968.000

N 162.000

N 160.000

N 158.000



SHEET LAYOUT - NOT TO SCALE -

- PROJECT SPECIFIC NOTES:
- THE INFORMATION DEPICTED ON THIS MAP REPRESENTS THE RESULTS OF SURVEYS MADE ON THE DATES INDICATED AND CAN ONLY BE CONSIDERED AS THE GENERAL CONDITIONS EXISTING AT THAT TIME.
- THE SOUNDINGS ON THIS MAP MEET EM 1110-2-1003 ACCURACY STANDARDS.
- COORDINATES REFER TO US STATE PLANE COORDINATE SYSTEM NAD 1983, LONG ISLAND LAMBERT - ZONE 3104, US SURVEY FEET.
- SOUNDINGS ON THIS MAP REFER TO THE PLANE OF MEAN LOWER LOW WATER (MLLW) [EPOCH 1983-2001].
- MEAN LOWER LOW WATER IS 2.7-2.8 FEET BELOW NAVD83 AS DETERMINED USING VDUTUM EVER, 3.01.
- SOUNDINGS DEPICTED ON THIS MAP ARE BASED ON A 3' X 3' MEDIAN CELL, SORTED TO A 45° INTERVAL.
- CONTOURS ON THIS MAP WERE GENERATED USING THE MAP DATA SET.
- THE DATA DEPICTED ON THIS MAP SHOULD NOT BE USED FOR VOLUME CALCULATION PURPOSES.
- THIS SURVEY WAS PERFORMED USING REAL TIME KINEMATIC GPS FROM STATION "SIMPSON 2 RM 3.NPS SANDY HOOK-BAY-NY DOT RTN".
- THIS MAP IS CEPP COMPLIANT IN ACCORDANCE WITH ER 1110-2-8160 AND EM 1110-2-6056.

Table with 2 columns: NSRS BENCHMARK and LOCAL CONTROL DATA. Includes details for SIMPSN 2 and F 342 benchmarks.



CLICK ON ICON EDGE TO OPEN